

AP/MALDI

Connecting a variety of mass spectrometers globally with MSI

Peter Verhaert

Outline

- The AP/MALDI community is growing
- AP/MALDI has many cool applications (the best is yet to come!)
- AP/MALDI installations are easy
- Now is the time for a global AP/MALDI user community?

The AP/MALDI community is growing...



MassTech*



ASPEC
advancing science

华质泰科生物技术(北京)有限公司
ASPEC TECHNOLOGIES LIMITED



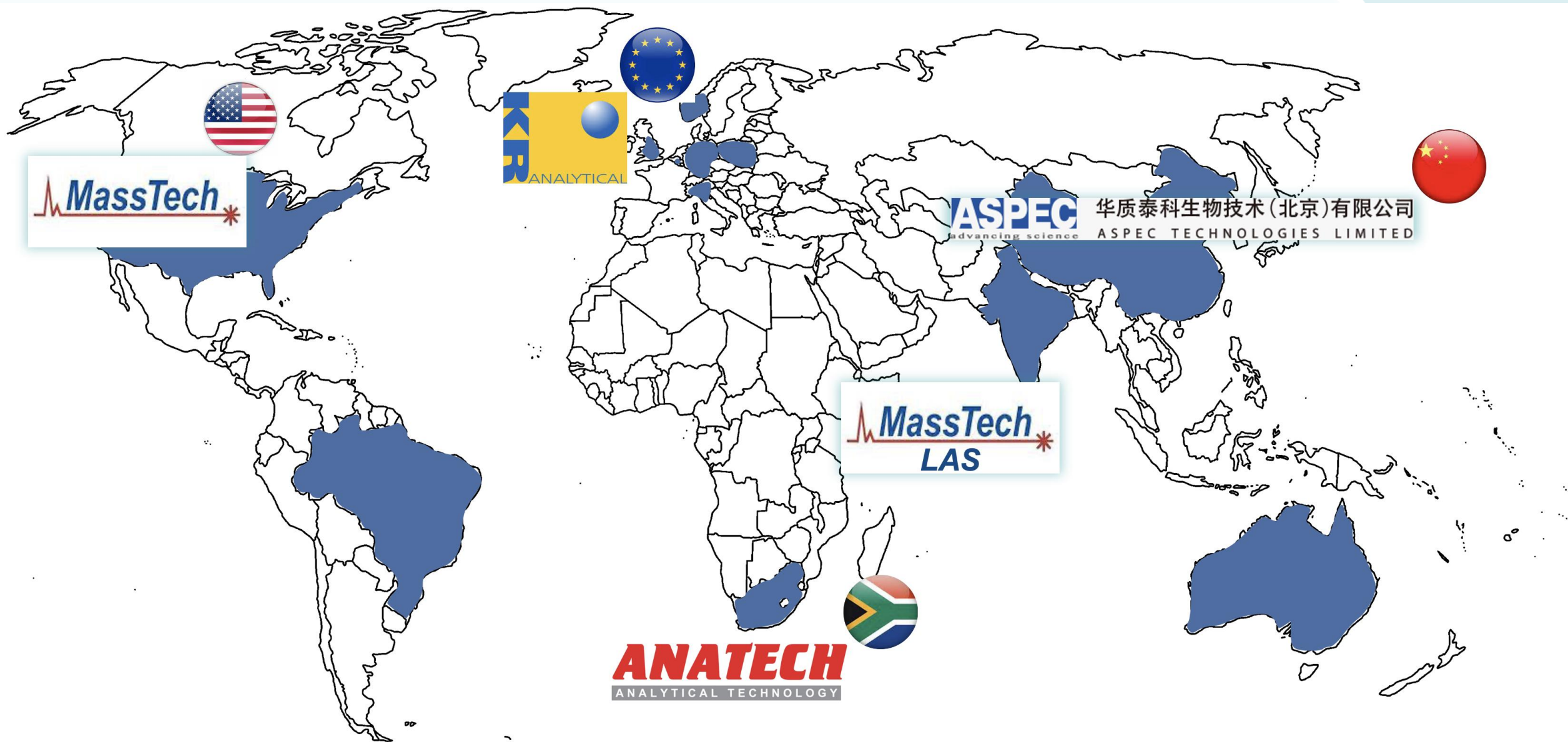
MassTech
LAS*



ANATECH
ANALYTICAL TECHNOLOGY

...on every continent!

The AP/MALDI community is growing



...on every continent!

AP/MALDI has many cool applications (the best is yet to come!)

ASMS Mass Spectrometry & Allied Topics
June 2 - 6, 2024
Anaheim Convention Center
Anaheim CA
Visit us @ Booth 240

MassTech

Breakfast Seminar
@ Room 213C

6/3 MONDAY
7:00-08:15 AM PST

6/4 TUESDAY
7:00-08:15 AM PST

ENRICO DAVOLI
Istituto Mario Negri, Milan, Italy
SPME analysis on a portable MS/MS instrument

CALEIGH O'CONNOR
MassTech Inc., MO, USA
Expanding Analytical Frontiers:
Showcasing the Portability and Versatility of
Miniature Ion Trap Mass Spectrometry

NIVEDITA BHATTACHARYA
Barefeet Analytics Private Limited, India
Applications of AP/MALDI with triple
quadrupole mass analyzers

RUSS KIBBE
North Carolina State University, USA
Software for efficient AP/MALDI MSI
data analysis

PETER VERHAERT
ProteoFormix, Belgium
AP/MALDI: Connecting a variety of mass
spectrometers globally with MSI

GILLES FRACHE
Luxembourg Institute of Science and Technology
AP/MALDI coupled with Orbitraps:
Principle, applications and current developments

ERIN SEELEY
University of Texas, Austin, USA
Sequential imaging with AP/MALDI for
Enhanced Tissue Characterization

ALICE PASSONI
Istituto Mario Negri, Milan, Italy
Imaging Investigations Using AP/MALDI:
Drugs and Metabolites Distribution

TIMO HUANG
University of Wisconsin-Madison, USA
In situ deciphering protein glycosylation
signatures in human ovarian cancer
via combined MALDI MS imaging
and tandem MS

<https://www.opmaldi.com>

sales@opmaldi.com

Presentation | Imaging MS: Method Development II (ThP 443-476)
Poster

ThP 476 Advances in top-down HRMS
with AP/MALDI orbitraps for spatial
analysis of peptides/metabolites in
human pathology FFPE tissue archives

Thu Jun 06
10:30-14:30 (PDT)

Peter Verhaert

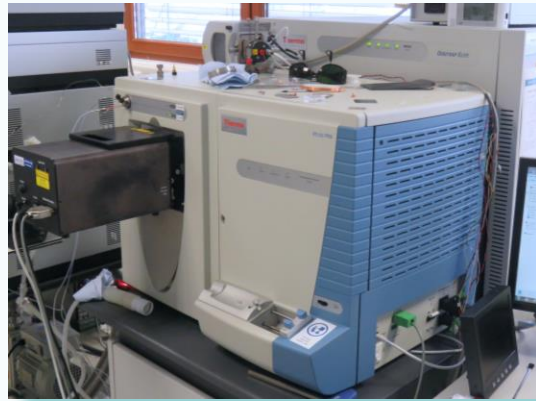
476
ThP 476

AP/MALDI applications are pushing the frontiers of analytical possibilities...

AP/MALDI installations are easy



LTQ Orbitrap Velos™



Orbitrap Elite Velos PRO™



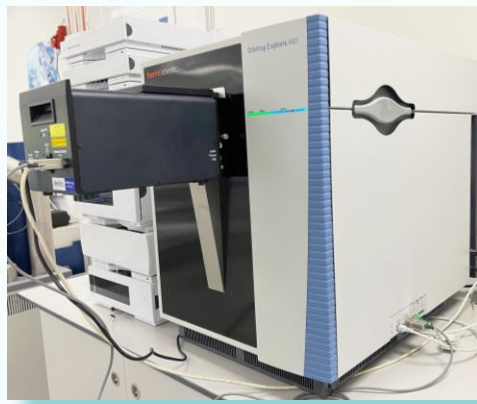
Orbitrap Exactive Plus™



Orbitrap Q Exactive™



Orbitrap Exploris 240™



Orbitrap Exploris 480™



Orbitrap Fusion Lumos™



... giving access to MALDI (imaging) on (HR)MS systems [all generation orbitraps, including QEs, tribrids]



... giving access to MALDI (imaging) on other vendor MS systems as well...



Let's start an AP/MALDI focused global user community!

- Starting new applications in the field dominated by other (complementary) technology, requires high 'activation energy'
- Many AP/MALDI users are happy to share their experience with newcomers
- Let's help each other and build expand this AP/MALDI user community
 - Make our colleagues aware of who has what so that users can interconnect and address challenges / solve problems together
 - web-based platform to exchange experiences, protocols,...
 - organize workshops, user meetings, webinars, ...

A photograph of the Austin skyline at sunset, with buildings illuminated and their lights reflected in a body of water in the foreground. The sky is a mix of orange, pink, and purple.

Mass Spectrometry Imaging Short Course and Workshop
Classroom Instruction – July 16-17
Optional Hands-On Lab Instruction – July 15, 18, or 19, 2024

University of Texas at Austin



2024 Mass Spectrometry Imaging Workshop *Innovation in Spatial Analysis*

REGISTRATION & ABSTRACT
SUBMISSION ARE OPEN!!

July 28-30, 2024

<https://imsisamericas.org/>

University of Wisconsin-Madison

School of Pharmacy

