

MT Explorer 50

Interfaced with AP/MALDI ion source For Biological Applications

A compact tandem mass analyzer with performance of a desktop instrument - ideal for field and lab hood use

Features:

Atmospheric pressure interface (API)

MS and MS/MS modes of operation

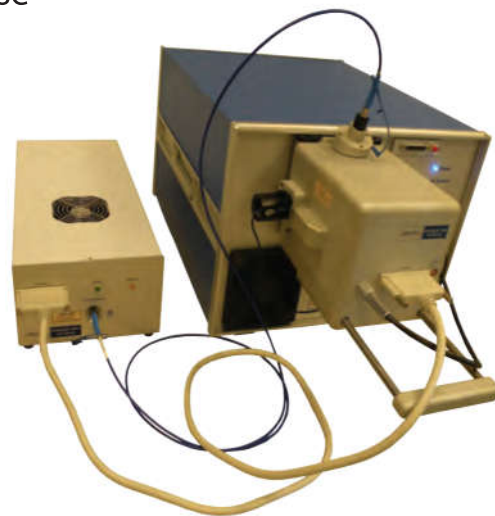
Mass range: 30-2,500 Da

Mass accuracy: 0.3 Da

Weight: 75 lbs

Dimension: 12" x 17" x 20"

Power: 100-300 W



MT Explorer 50 in combination with AP/MALDI

Limit of Detection

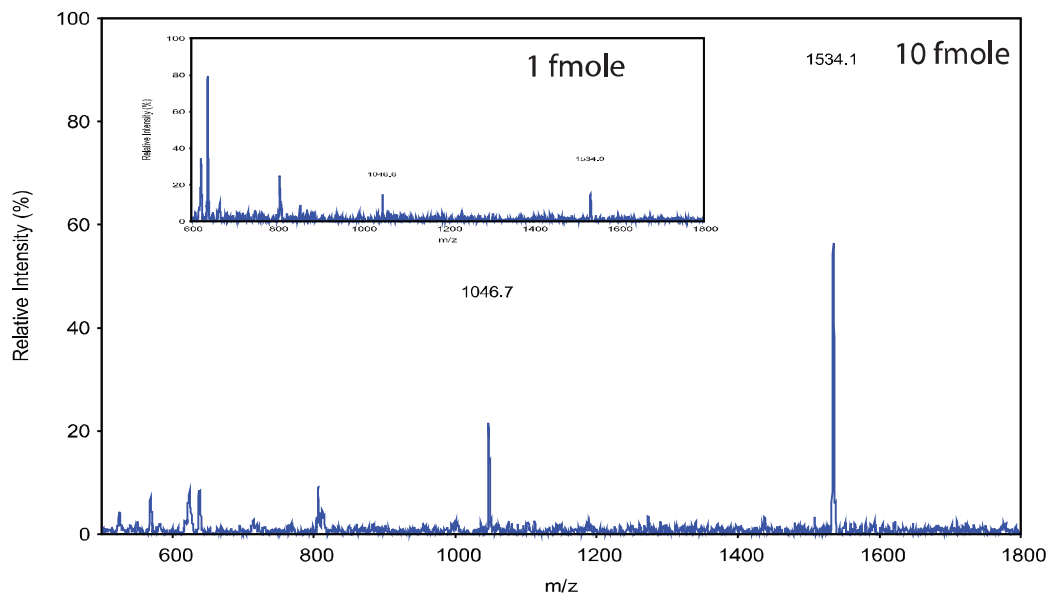


Figure 1. AP MALDI MS spectra of peptide mixture of Angiotensin II (M.W. 1046 Da) and P14R (M.W. 1534 Da): 10 fmole and 1 fmole (insert) loaded

MT Explorer 50

MS/MS Capability

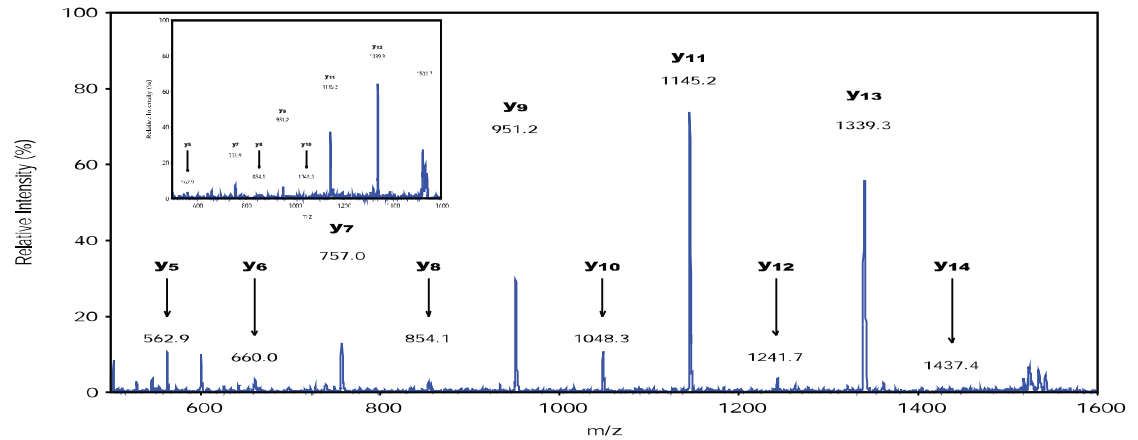


Figure 2. AP MALDI MS/MS spectra of P14R peptide ions: 10 fmole and 1 fmole (insert) loaded

Identification of *Bacillus Globigii* Spores

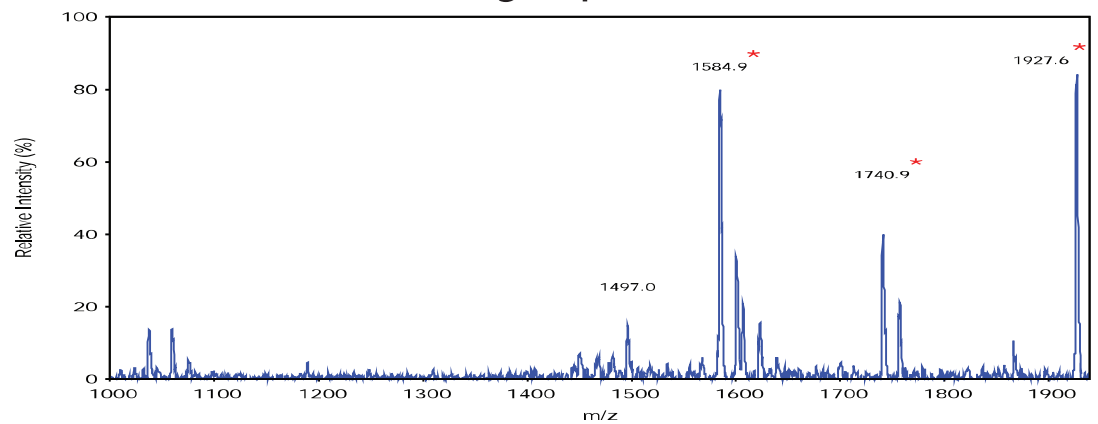


Figure 3. AP MALDI MS spectrum of *Bacillus Globigii* spores after chemical processing and digestion by trypsin (BG spores biomarker peptide are indicated)

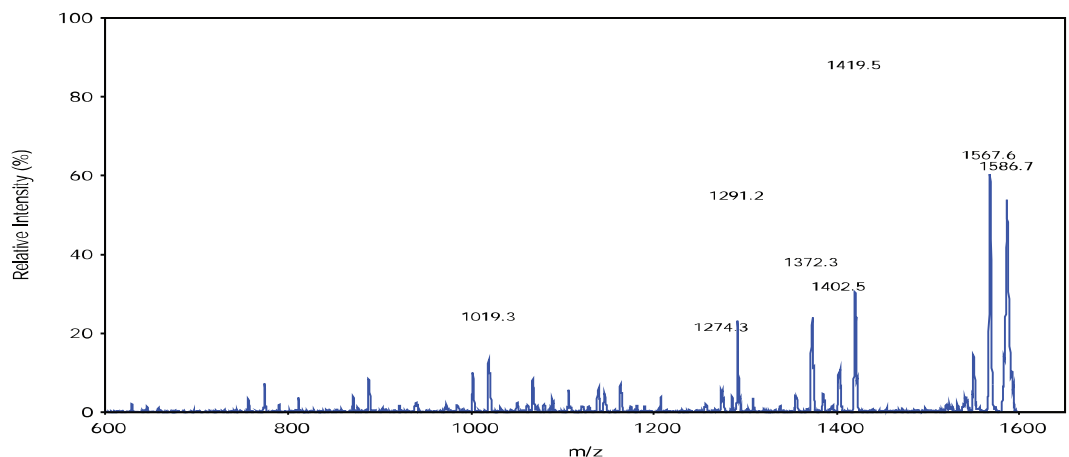


Figure 4. AP MALDI MS/MS spectrum of BG peptide ion with m/z value of 1584 in the spectrum above