

MasTech Inc., Columbia, Maryland USA, is a privately owned analytical instrumentation and technology company incorporated in 2001 for developing atmospheric pressure MALDI, field deployable mass spectrometry, and conducting on-going research and development in support of product lines.

MasTech's AP/MALDI ion source product has been adapted to commercial mass spectrometers from major equipment manufacturers: Agilent, AB SCIEX, Thermo, Waters/Micromass, Bruker, Shimadzu, and JEOL, for both OEM and direct sales around the world.

MasTech's field deployable MT Explorer 100 ion trap mass spectrometer offers desktop performance and multiple software applications. Its compact design is ideal for field use and its MS<sup>n</sup> capability is great for structure elucidations and chemical and biological identifications.



# MT Explorer 100

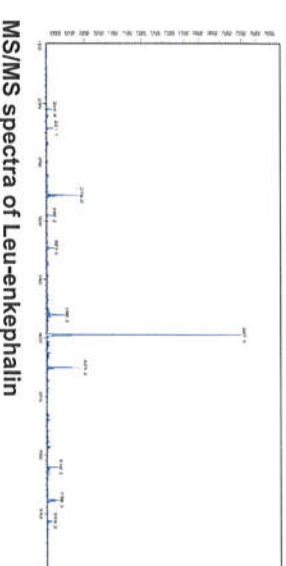
Portable / Field Deployable  
Ion Trap Mass Spectrometer



MasTech, Inc.  
6992 Columbia Gateway Drive,  
Suite #160  
Columbia, MD 21046  
Tel: +1-(443)-539-1758  
Fax: +1-(443)-539-1759  
<http://www.apmaldi.com>  
[mmsms@apmaldi.com](mailto:mmsms@apmaldi.com)

Introducing a portable/field deployable ion trap mass spectrometer, the MT Explorer 100, from MassTech Inc.

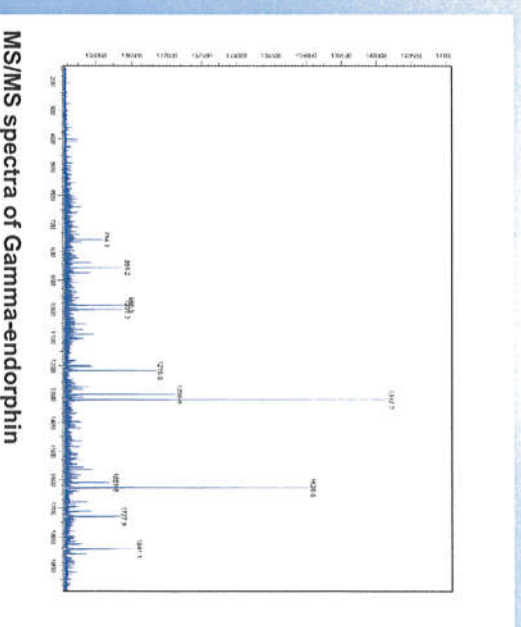
- Applications**
- Chemical and biological samples
  - Environmental samples
  - Pharmaceuticals
  - Foods and fragrances
  - Other samples: Peptides, proteins, carbohydrates, lipids, polymers, etc.



MS/MS spectra of Leu-enkephalin

Until now, you had to choose between performance and convenience. No longer. The new MT Explorer 100, gives you desktop performance in a portable package. The compact design makes it ideal for field use. Its powerful MS<sup>n</sup> function makes structure elucidation much easier. Its atmospheric pressure inlet makes it easy to switch between AP MALDI, ESI, AP/CI, and other ion sources for various applications.

MT Explorer 100 ion trap MS operating parameters	
Mode of operations	MS and MS <sup>n</sup>
Mass range	30-2,500 Da
Scan rate	1,000 to 8,000 Da/Sec
Resolution	6,000 @ 2,000 Da and 4,000 Da/Sec
Mass accuracy	0.3 Da
Weight	70 lbs (without laptop)
Dimension	19" x 17" x 16.5"
Power	AC/DC



MS/MS spectra of Gamma-endorphin