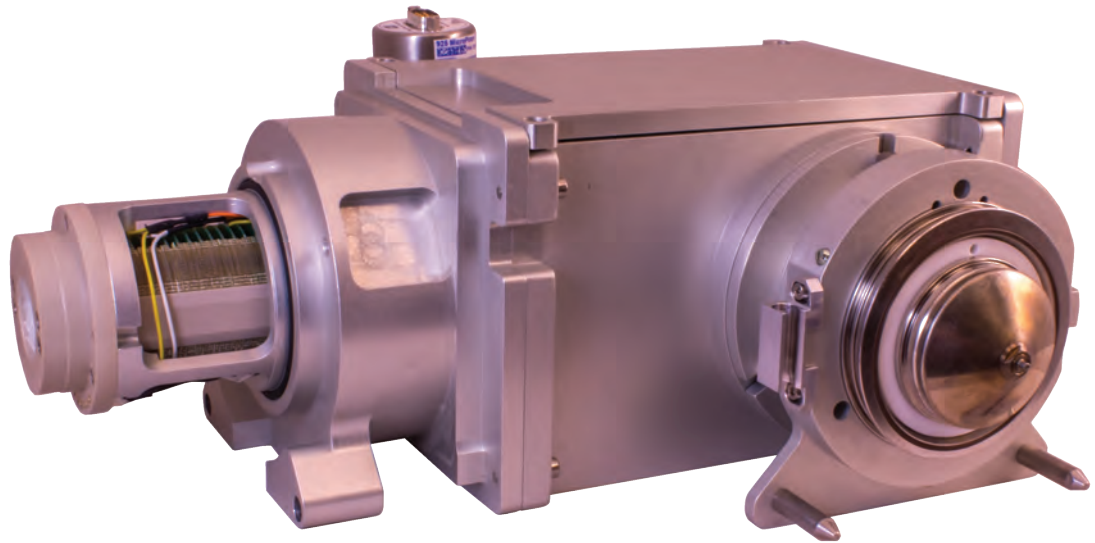


Ion funnel for AP MALDI source

heated cone accomodates
capillaries of 0.5-1.5 mm i.d.

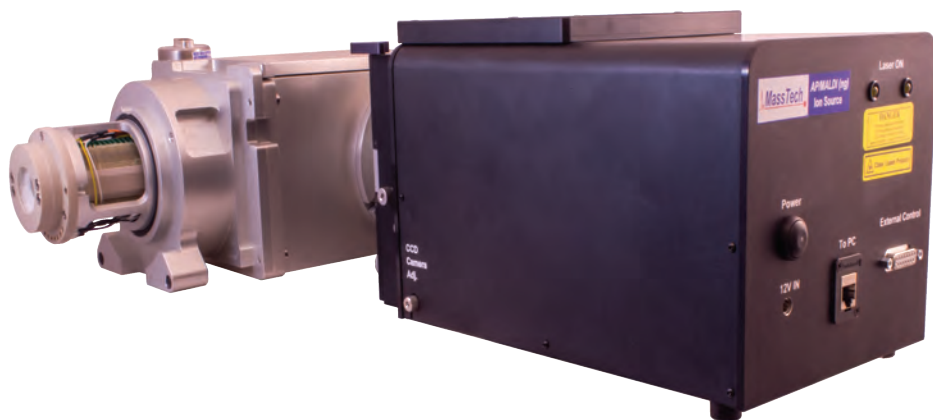


- Operates at 0.5-16 Torr
- Capillary can be heated up to 450 C
- Two-stage ion-funnel

...Provides 4-10 fold increase in S/N ratios of analyte peaks when running MALDI or ESI samples

AP/MALDI(ng) source with the ion funnel

Achieving $<10\text{-}\mu\text{m}$ spatial resolution
on the target plate



- Compact Design
- Ion-funnel technology
- No contamination of the funnel or MS system with MALDI matrix material
- Dual use: MALDI or ESI source

Compatible with
LTQ/Velos
LTQ-Orbitrap
Q-Exactive